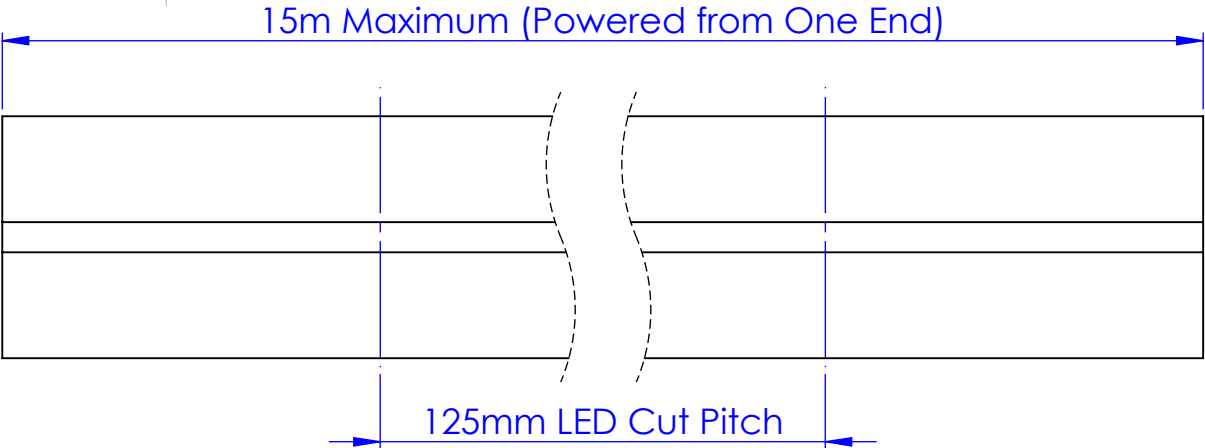
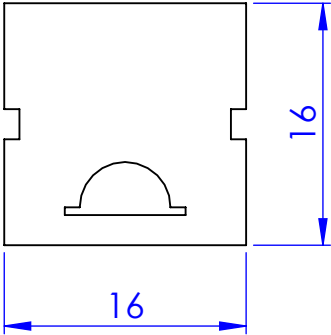
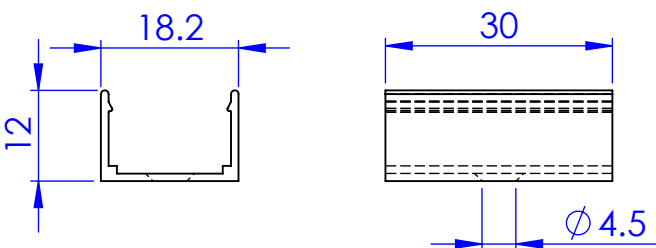


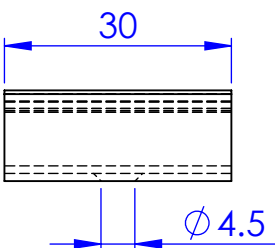
Dimensions



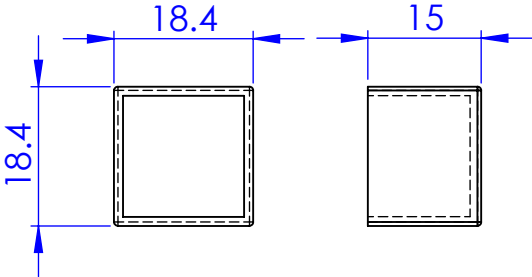
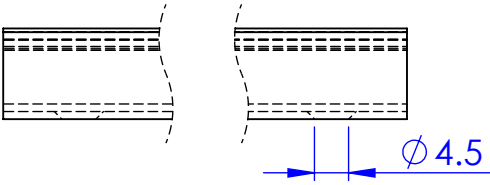
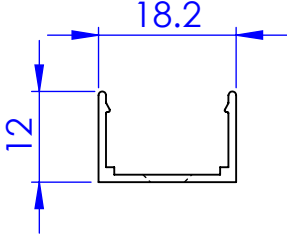
Compatible Accessories



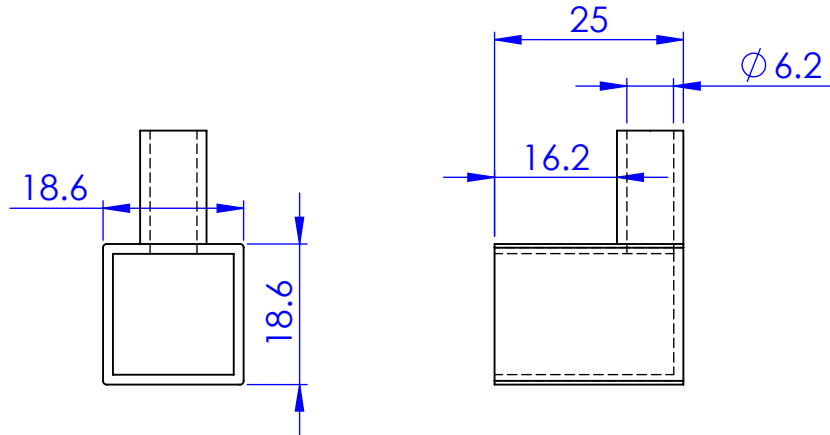
Bracket - UA49249



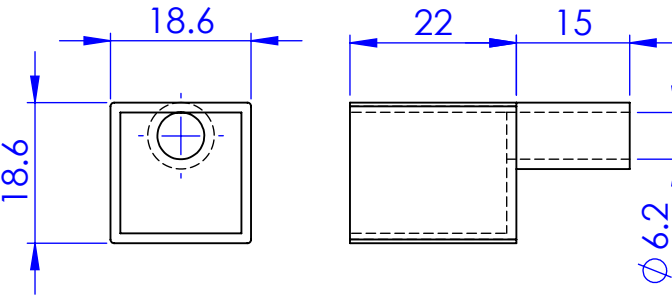
Housing - UA49248



End Cap - UA49250

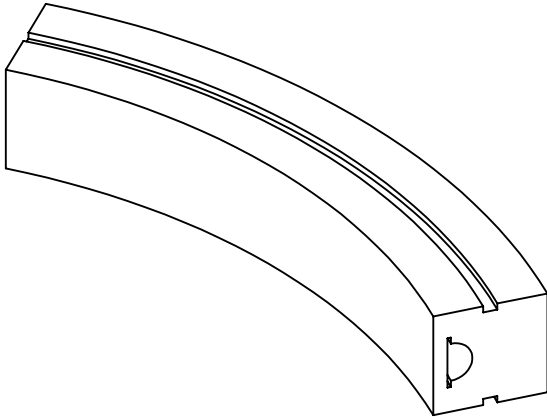


Output Cap - UA49241



Input Cap - UA492340

Bend Radii



40mm Minimum Bend Radius

ANY QUERIES OR IF IN DOUBT PLEASE CONTACT THE DESIGNER

unibox

Greengate Industrial Estate, Greenside Way, Middleton,
Manchester, M24 1SW, UK W: www.unibox.co.uk
info@unibox.co.uk
Tel: 0845 277 6000 Fax: 0845 277 6001

Copyright © 2022. This drawing and all copies and derivative
works are the exclusive property of United Aluminium Limited.
This drawing must not be copied or disclosed in any manner
to any third party without the prior written consent of a director
of United Aluminium Limited. All rights reserved.

DRAWING TITLE:
U-NEON-1616-TB-15-RGBW

MATERIAL:
VARIOUS

FINISH:
-

DRAWN BY:
JHD
CHECKED BEFORE PUBLISHING BY:
CC

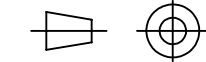
CREATED DATE:
26/09/2024

PART No:
UA49375

DRAWING No:
UA49375

REVISION:
A

SHEET No:
1 of 1



TOLERANCES:
DIMENSIONS IN MM
UNLESS OTHERWISE STATED

DIMENSIONS **+/- 0.5mm**
ANGLE **+/- 0.5°**

SHEET SIZE: **A3**
SCALE: **2:1**

CUSTOMER:
JOB REFERENCE:
QTY:

ENTER CUSTOMER
ENTER CRM#
ENTER QUANTITY

FINAL INSPECTION
(PRIOR TO DESPATCH)
DATE: SIGNED:

FABRIC INCLUDED?
YES: NO:
TEST FABRIC BEFORE PACKING

REQUIRED DATE:
DELIVERY METHOD:

ENTER DATE
ENTER METHOD