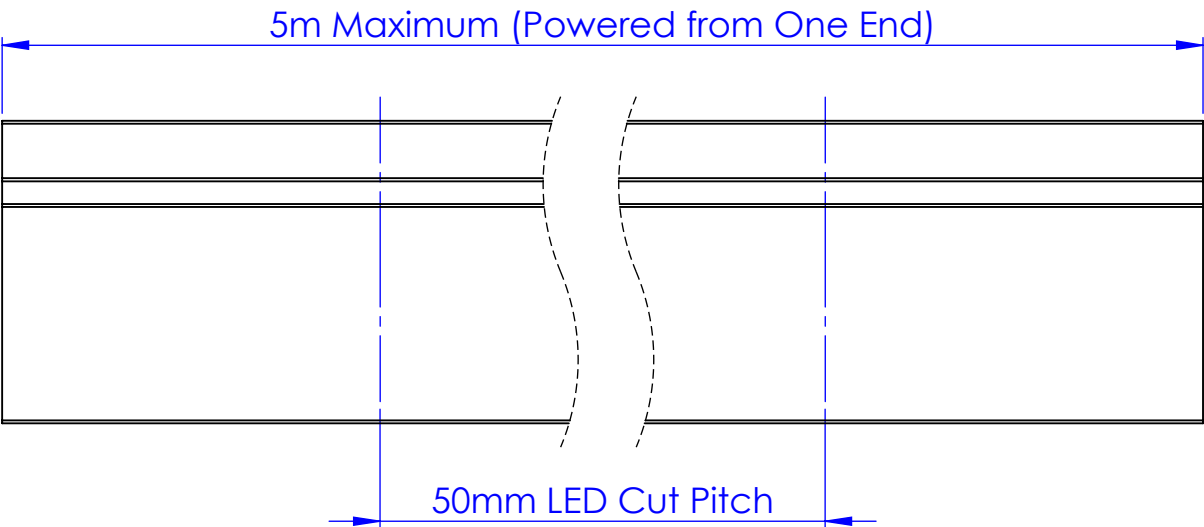
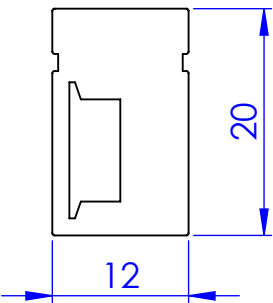
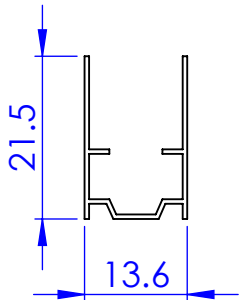


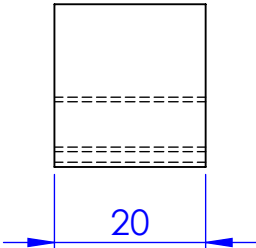
Dimensions



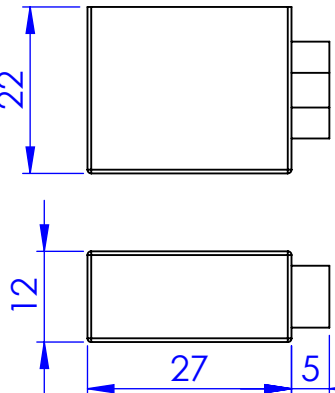
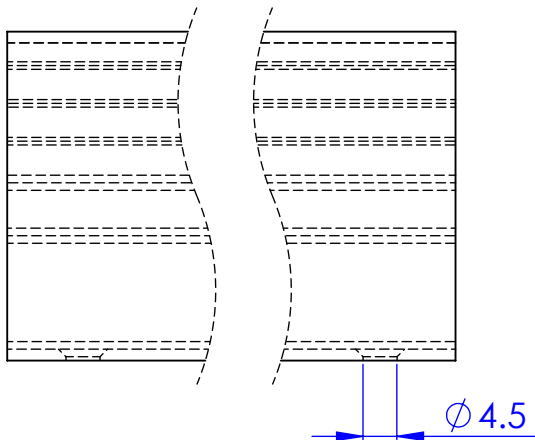
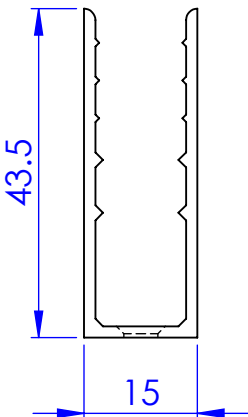
Compatible Accessories



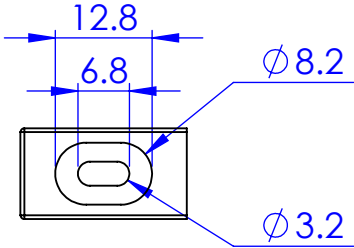
Bracket UA49246



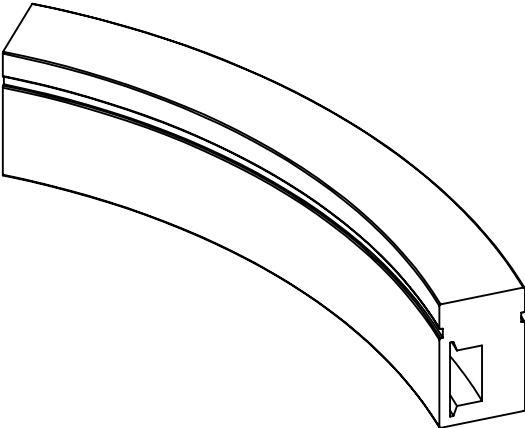
Housing UA49245



Input Cap UA49247



Bend Radii



30mm Minimum Bend Radius

ANY QUERIES OR IF IN DOUBT PLEASE CONTACT THE DESIGNER

CUSTOMER:
JOB REFERENCE:
QTY:

REQUIRED DATE:
DELIVERY METHOD:

ENTER CUSTOMER
ENTER CRM#
ENTER QUANTITY

ENTER DATE
ENTER METHOD

FINAL INSPECTION
(PRIOR TO DESPATCH)
DATE: SIGNED:

FABRIC INCLUDED?
YES: NO:
TEST FABRIC BEFORE PACKING

unibox

Greengate Industrial Estate, Greenside Way, Middleton,
Manchester, M24 1SW, UK W: www.unibox.co.uk
info@unibox.co.uk
Tel: 0845 277 6000 Fax: 0845 277 6001

Copyright © 2022. This drawing and all copies and derivative
works are the exclusive property of United Aluminium Limited.
This drawing must not be copied or disclosed in any manner
to any third party without the prior written consent of a director
of United Aluminium Limited. All rights reserved.

DRAWING TITLE:
U-NEON-1220-SB-12-WN

MATERIAL:
VARIOUS

FINISH:
-

DRAWN BY:
JHD
CHECKED BEFORE PUBLISHING BY:
CC

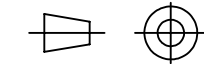
CREATED DATE:
26/09/2024

PART No:
UA49366

DRAWING No:
UA49366

REVISION:
A

SHEET No:
1 of 1



TOLERANCES:
DIMENSIONS IN MM
UNLESS OTHERWISE STATED
DIMENSIONS +/- 0.5mm
ANGLE +/- 0.5°

SHEET SIZE: A3
SCALE: 3:2