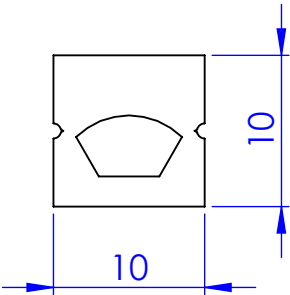
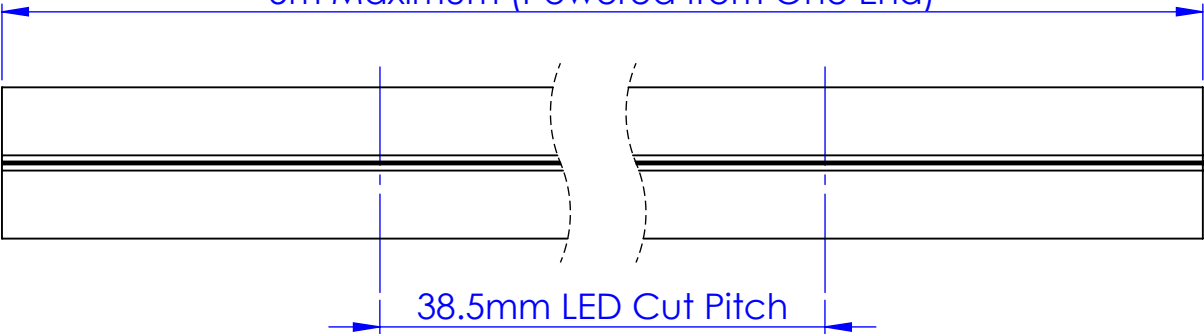


Dimensions

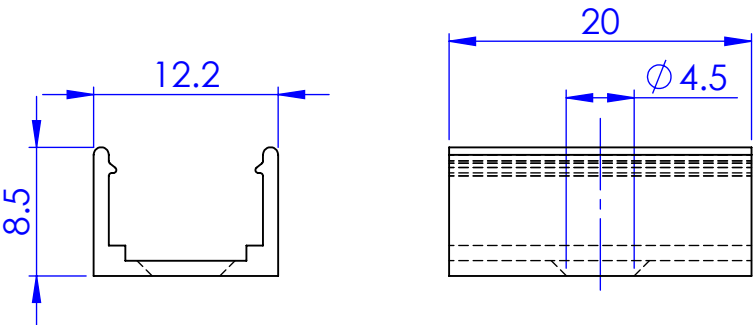
Available Colour Temperatures:
2200K, 2700K, 3000K, 4000K, 6500K



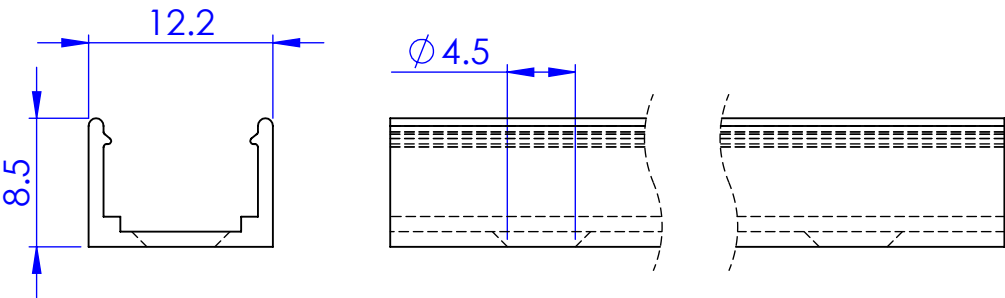
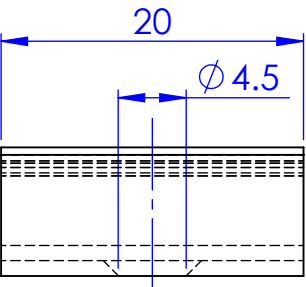
5m Maximum (Powered from One End)



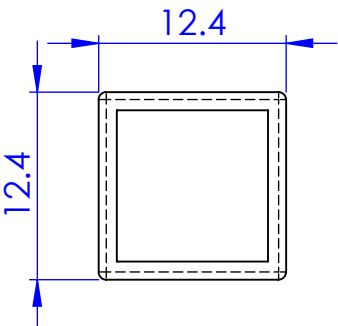
Compatible Accessories



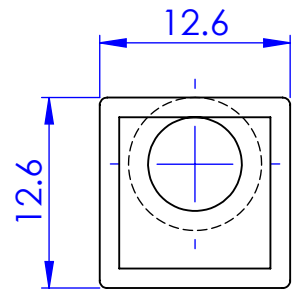
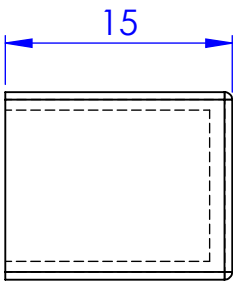
Bracket UA49437



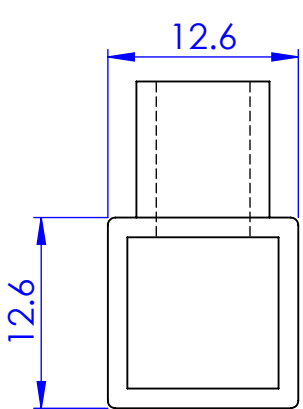
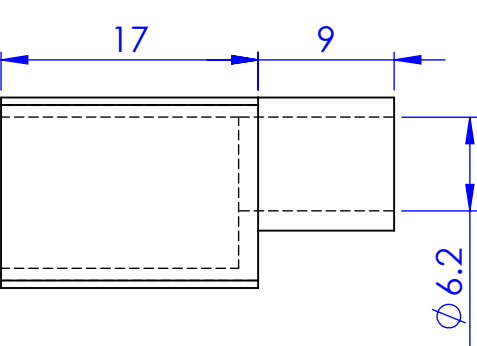
Housing UA49436



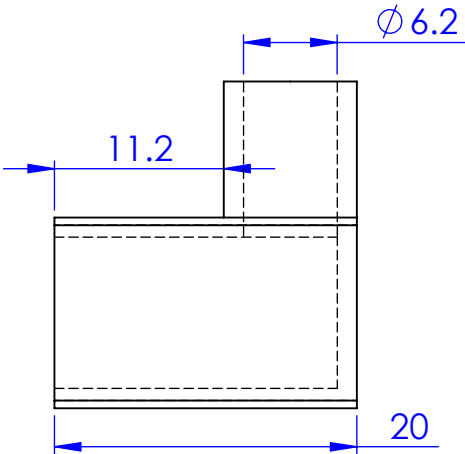
End Cap UA49438



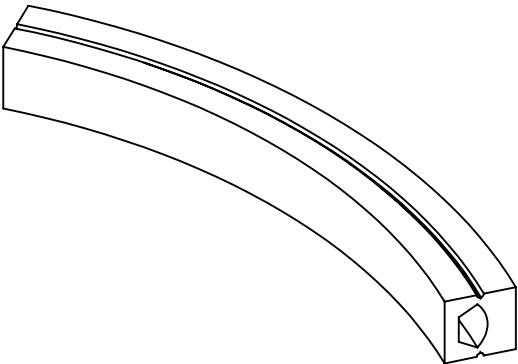
Input Cap UA49439



Output Cap UA49440



Bend Radii



30mm Minimum Bend Radius

ANY QUERIES OR IF IN DOUBT PLEASE CONTACT THE DESIGNER

CUSTOMER: **ENTER CUSTOMER**
JOB REFERENCE: **ENTER CRM#**
QTY: **ENTER QUANTITY**

REQUIRED DATE: **ENTER DATE**
DELIVERY METHOD: **ENTER METHOD**

FINAL INSPECTION
(PRIOR TO DESPATCH)
DATE: _____ SIGNED: _____

FABRIC INCLUDED?
YES: _____ NO: _____
TEST FABRIC BEFORE PACKING

unibox

Greengate Industrial Estate, Greenside Way, Middleton,
Manchester, M24 1SW, UK W: www.unibox.co.uk
info@unibox.co.uk
Tel: 0845 277 6000 Fax: 0845 277 6001

Copyright © 2022. This drawing and all copies and derivative
works are the exclusive property of United Aluminium Limited.
This drawing must not be copied or disclosed in any manner
to any third party without the prior written consent of a director
of United Aluminium Limited. All rights reserved.

DRAWING TITLE:
U-NEON-1010-TB-14

MATERIAL:
VARIOUS

FINISH:
-

DRAWN BY: JHD
CHECKED BEFORE PUBLISHING BY: CC

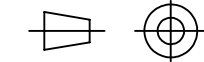
CREATED DATE:
26/09/2024

PART No:
UA49143

DRAWING No:
UA49143

REVISION:
A

SHEET No:
1 of 1



TOLERANCES:
DIMENSIONS IN MM
UNLESS OTHERWISE STATED

DIMENSIONS +/- 0.5mm
ANGLE +/- 0.5°

SHEET SIZE: A3
SCALE: 2:1