

Capella 2118

UA10292

Product Features:

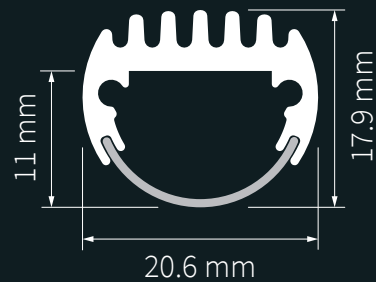
- Suitable to be used as a main or decorative light source.
- Features a finned profile at the rear to effectively dissipate heat generated by the LED's.
- Rounded profile to create a lightbar aesthetic.
- Suitable for undershelf lighting.



Product Specifications:

Material	Aluminium
Overall Dimensions (H x W)	17.9 mm x 17.4 mm
Profile Dimension (H x W)	13.4 mm x 20.6 mm
Weight per meter	0.265 kg
Profile Length	upto 3000 mm
Colour	Standard satin silver anodised. RAL colours available.
Maximum Tape Width	12 mm
IP Rating	IP 20
Mounting Method	Surface

Product Diagram:



*Drawing not to scale.

Optional Hardware:



End Cap
UA10733



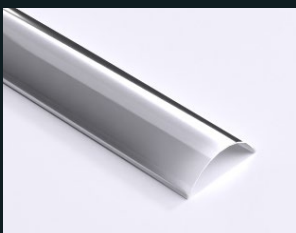
End Cap - One Way
UA18036



End Cap - Three Way
UA12080



Terry Clip
UA10735



Diffuser
Frosted, Clear