

F

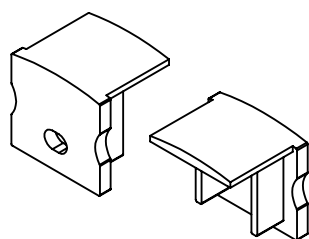


D



- FROSTED
- OPAL
- CLEAR

B



A

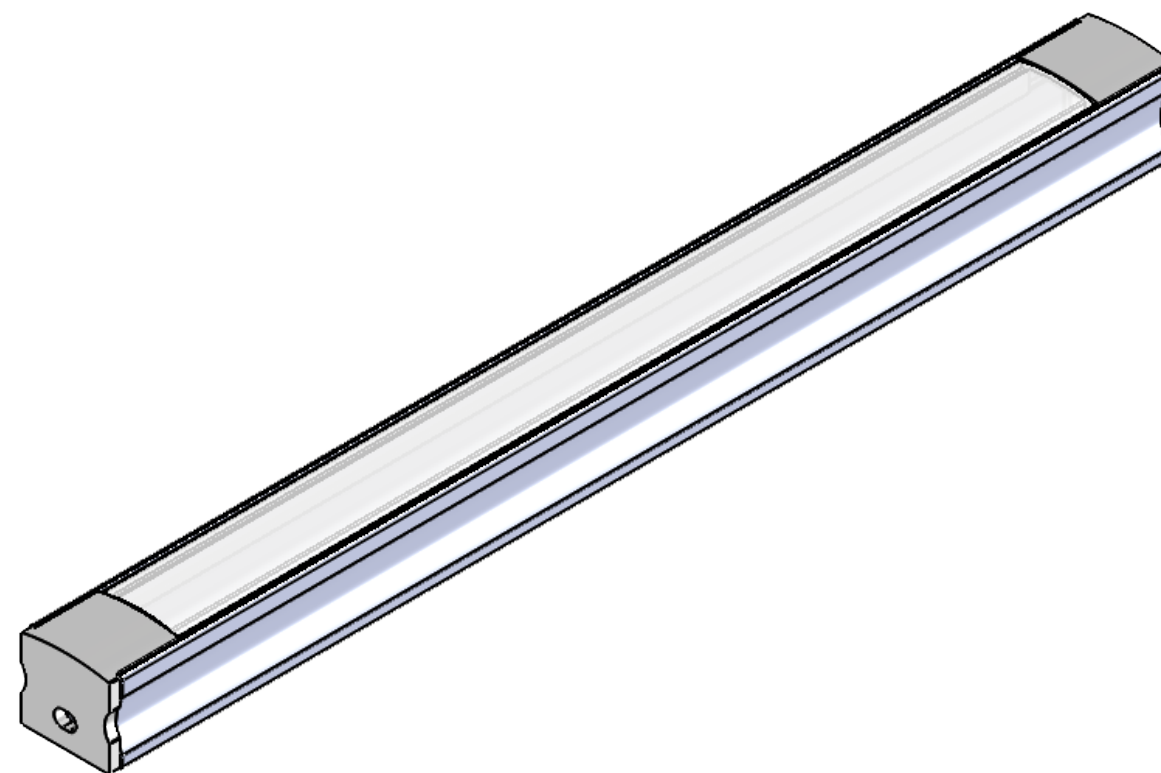
FABRIC INCLUDED?
YES: NO:
TEST FABRIC BEFORE PACKING

Greengate Industrial Estate, Greenside Way, Middleton,
Manchester, M24 1SW, UK W: www.unibox.co.uk
info@unibox.co.uk
Tel: 0845 277 6000 Fax: 0845 277 6001

Copyright © 2022. This drawing and all copies and derivative works are the exclusive property of United Aluminium Limited. This drawing must not be copied or disclosed in any manner to any third party without the prior written consent of a director of United Aluminium Limited. All rights reserved.

SHEET SIZE: A3
SCALE: 1:1

ANY QUERIES OR IF IN DOUBT PLEASE CONTACT THE DESIGNER



LIGHTBAR LENGTH - OVERALL

The diagram illustrates the relationship between three lengths for a lightbar:

- LIGHTBAR LENGTH - OVERALL**: The total length of the lightbar, indicated by a dimension line at the top.
- DIFFUSER CUT LENGTH**: The length of the diffuser cut, indicated by a dimension line in the middle.
- MAX STOCKED LENGTH: 3M**: The maximum length the lightbar can be stocked, indicated by a dimension line at the bottom.

Additional dimensions shown include 14 (on either side of the diffuser cut length) and 2 (at the ends of the max stocked length).

MAX STOCKED LENGTH: 3M