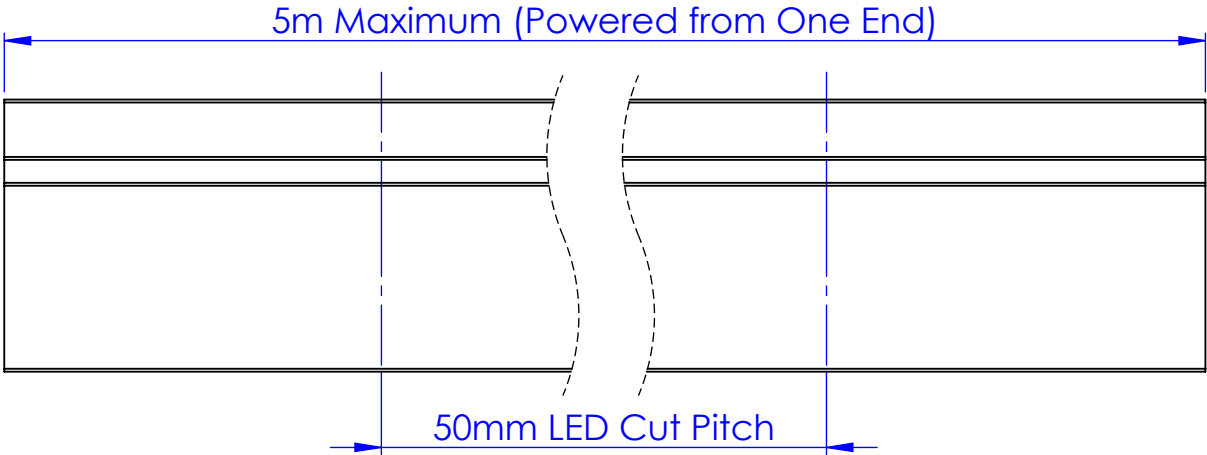
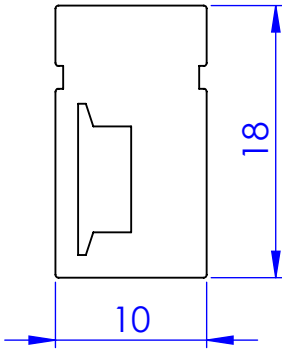
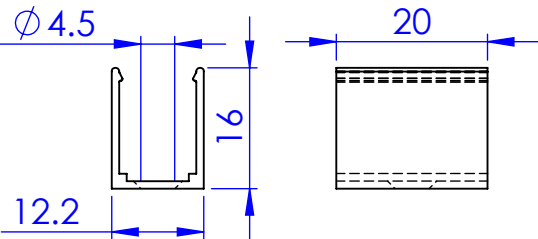


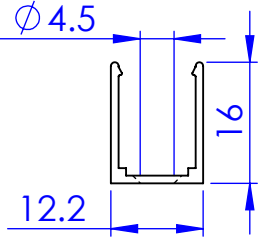
Dimensions



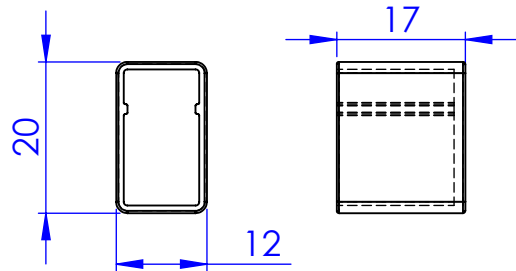
Compatible Accessories



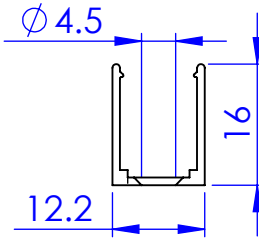
Bracket UA49237



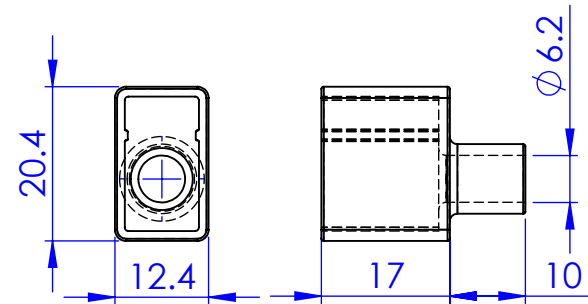
Housing UA49236



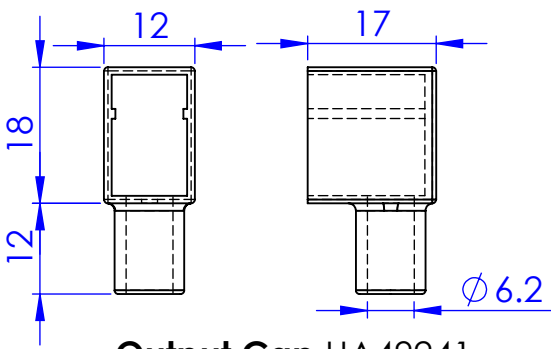
End Cap UA49239



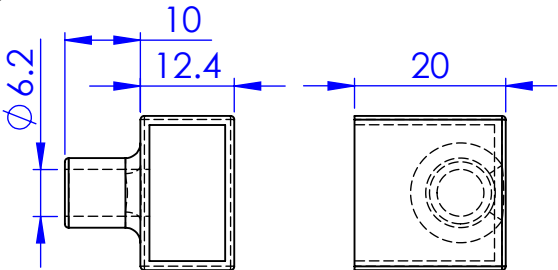
Bendable Housing UA49238



Input Cap UA492340

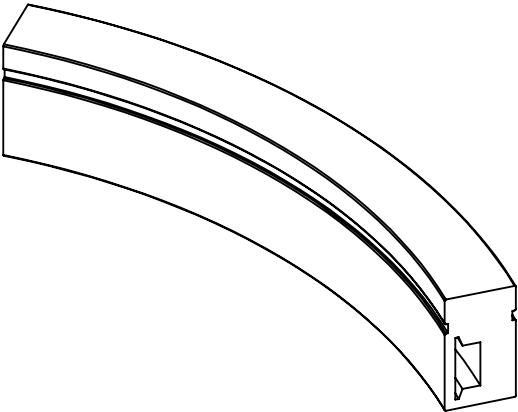


Output Cap UA49241



Side Cap UA49242

Bend Radii



30mm Minimum Bend Radius

ANY QUERIES OR IF IN DOUBT PLEASE CONTACT THE DESIGNER

unibox

Greengate Industrial Estate, Greenside Way, Middleton,
Manchester, M24 1SW, UK W: www.unibox.co.uk
info@unibox.co.uk
Tel: 0845 277 6000 Fax: 0845 277 6001

Copyright © 2022. This drawing and all copies and derivative works are the exclusive property of United Aluminium Limited. This drawing must not be copied or disclosed in any manner to any third party without the prior written consent of a director of United Aluminium Limited. All rights reserved.

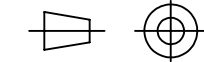
DRAWING TITLE:
U-NEON-1018-SB-14-RGBW

MATERIAL:
VARIOUS

FINISH:
-

DRAWN BY:
JHD
CHECKED BEFORE PUBLISHING BY:
CC
CREATED DATE:
26/09/2024

PART No:
UA49364
DRAWING No:
UA49364
REVISION:
A
SHEET No:
1 of 1



TOLERANCES:
DIMENSIONS IN MM
UNLESS OTHERWISE STATED
DIMENSIONS +/- 0.5mm
ANGLE +/- 0.5°

SHEET SIZE:
A3
SCALE:
2:1

CUSTOMER:
JOB REFERENCE:
QTY:

ENTER CUSTOMER
ENTER CRM#
ENTER QUANTITY

REQUIRED DATE:
DELIVERY METHOD:

ENTER DATE
ENTER METHOD

FINAL INSPECTION
(PRIOR TO DESPATCH)
DATE: SIGNED:

FABRIC INCLUDED?
YES: NO:
TEST FABRIC BEFORE PACKING