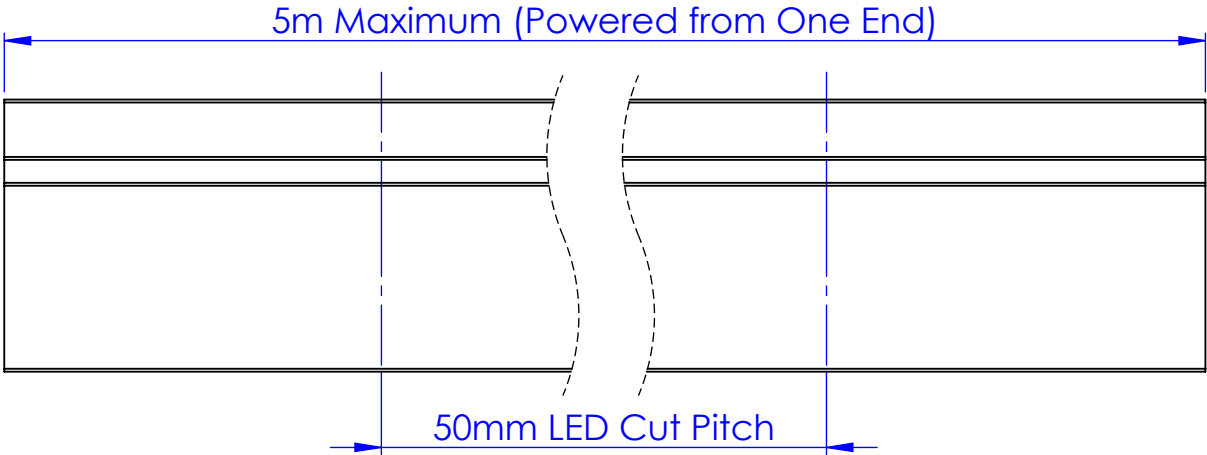
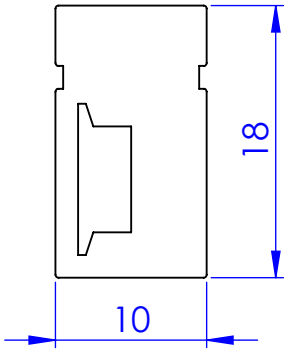
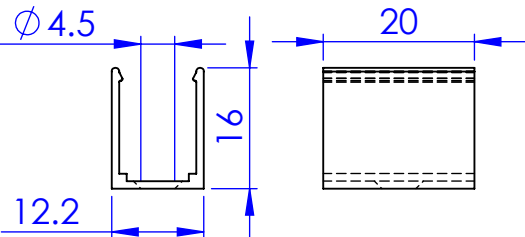


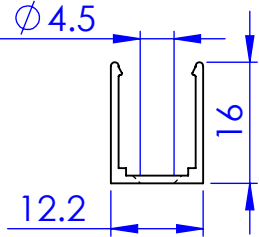
Dimensions



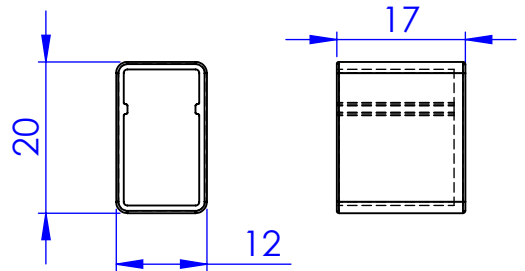
Compatible Accessories



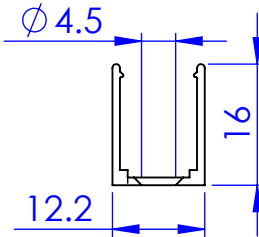
Bracket UA49237



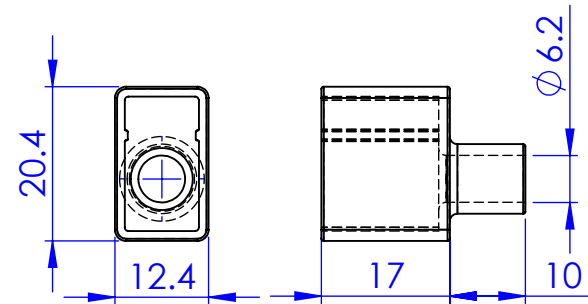
Housing UA49236



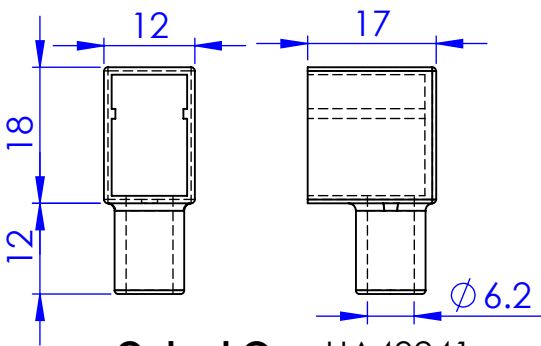
End Cap UA49239



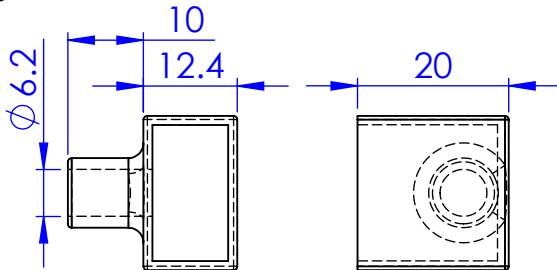
Bendable Housing UA49238



Input Cap UA492340

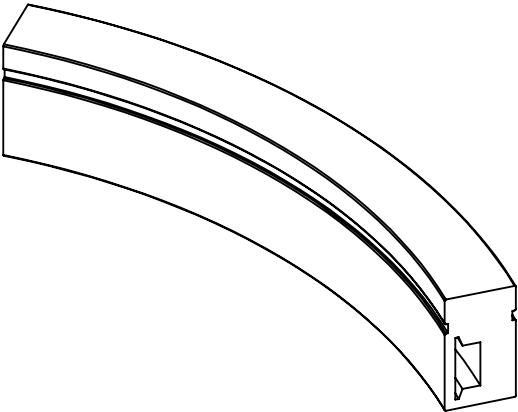


Output Cap UA49241



Side Cap UA49242

Bend Radii



30mm Minimum Bend Radius

ANY QUERIES OR IF IN DOUBT PLEASE CONTACT THE DESIGNER

unibox

Greengate Industrial Estate, Greenside Way, Middleton,  
Manchester, M24 1SW, UK W: www.unibox.co.uk  
info@unibox.co.uk  
Tel: 0845 277 6000 Fax: 0845 277 6001

Copyright © 2022. This drawing and all copies and derivative  
works are the exclusive property of United Aluminium Limited.  
This drawing must not be copied or disclosed in any manner  
to any third party without the prior written consent of a director  
of United Aluminium Limited. All rights reserved.

DRAWING TITLE:  
U-NEON-1018-SB-14-RGB

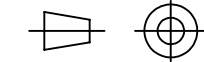
MATERIAL:  
VARIOUS

FINISH:  
WHITE

DRAWN BY:  
JHD  
CHECKED BEFORE PUBLISHING BY:  
CC  
CREATED DATE:  
26/09/2024

PART No:  
UA49363  
DRAWING No:  
UA49363

REVISION:  
A  
SHEET No:  
1 of 1



TOLERANCES:  
DIMENSIONS IN MM  
UNLESS OTHERWISE STATED

DIMENSIONS +/- 0.5mm  
ANGLE +/- 0.5°

SHEET SIZE:  
A3  
SCALE:  
2:1

CUSTOMER:  
JOB REFERENCE:  
QTY:

ENTER CUSTOMER  
ENTER CRM#  
ENTER QUANTITY

REQUIRED DATE:  
DELIVERY METHOD:

ENTER DATE  
ENTER METHOD

FINAL INSPECTION  
(PRIOR TO DESPATCH)  
DATE: SIGNED:

FABRIC INCLUDED?  
YES: NO:  
TEST FABRIC BEFORE PACKING